

Navigating Early Childhood Special Education (Preschool)

Kelsey Biswanger

Early Childhood and Youth Training Specialist



Agenda

- Preschool Development
- Individuals with Disabilities Education Act (IDEA)
- Free Appropriate Public Education (FAPE)
- Least Restrict Environment (LRE)
- Michigan Administrative Rules for Special Education (MARSE)
- Individualized Education Program (IEP)
- Procedural Safeguards

Agenda

- **Preschool Development**

- Individuals with Disabilities Education Act (IDEA)
- Free Appropriate Public Education (FAPE)
- Least Restrict Environment (LRE)
- Michigan Administrative Rules for Special Education (MARSE)
- Individualized Education Program (IEP)
- Procedural Safeguards

Preschool

- A foundation for cognitive, social, emotional, and physical skills
- PreK for All
- Federal Indicators
 - Indicator 6: Preschool Educational Environments (ages 3 through 5 in Preschool)
 - Indicator 7: Preschool Outcomes
 - Indicator 8: Parent Involvement



Agenda

- Preschool Development
- **Individuals with Disabilities Education Act (IDEA)**
- Free Appropriate Public Education (FAPE)
- Least Restrict Environment (LRE)
- Michigan Administrative Rules for Special Education (MARSE)
- Individualized Education Program (IEP)
- Procedural Safeguards

Special Education in Preschool

Individuals with Disabilities
Education Act ([IDEA](#))

Michigan Administrative Rules
for Special Education ([MARSE](#))



Individuals with Disabilities Education Act



Individuals with Disabilities Education Act



A B C D



Part A – general provisions

Part B – assistance for all children with disabilities

- special education for ages 3-21
- section 619 is specific to preschool

Part C – birth to age 3.

- early intervention

Part D – national activities to improve education of children with disabilities

IDEA | Part B | Section 619

- Makes a free appropriate public education (FAPE) available to all children with disabilities 3 to 5 years of age
- Supplement to Part B to further assist states to educate preschool children (3 to 5 years) with identified developmental delays and disabilities by providing special education and related services in accordance with Part B requirements
- Provides an option to serve children, age 2, who will be turning 3 during the school year, allowing a more cohesive and less disruptive transition to a new setting



Agenda

- Preschool Development
- Individuals with Disabilities Education Act (IDEA)
- **Free Appropriate Public Education (FAPE)**
- Least Restrict Environment (LRE)
- Michigan Administrative Rules for Special Education (MARSE)
- Individualized Education Program (IEP)
- Procedural Safeguards

IDEA | Free Appropriate Public Education

Free — “without charge” to parents or children

Appropriate — “in keeping with an individualized education program”

Public — “at public expense, under public supervision and direction”

Education — “preschool, elementary.. .or secondary school...”



IDEA | FAPE

- Create an Individualized Education Program (IEP) based on the student's identified needs
 - Provide services that meet the unique needs of the student
 - Personalize accommodations and/or modifications
 - Discuss Least Restrictive Environment (LRE)
- Provide access to non-academic and extracurricular activities



Agenda

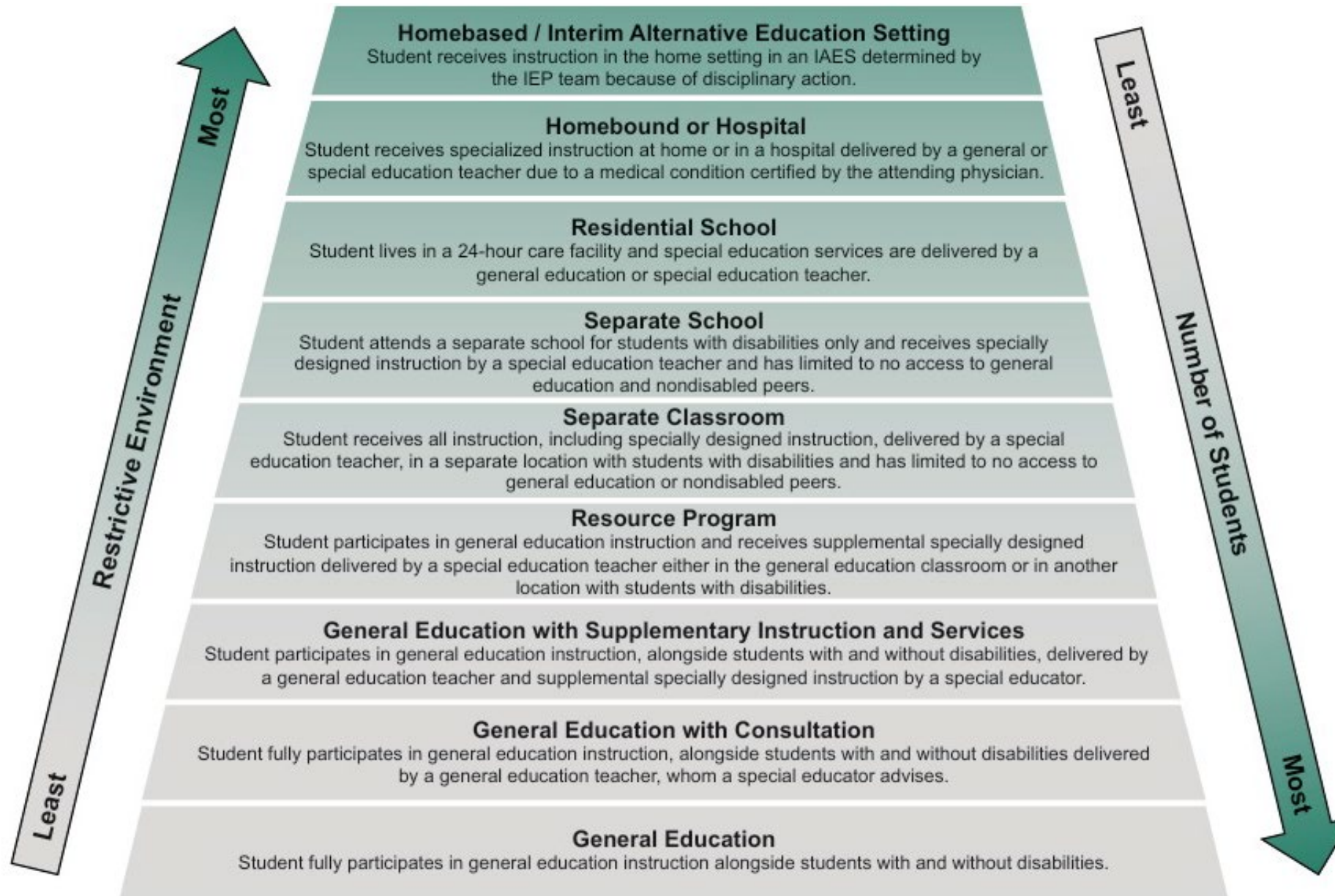
- Preschool Development
- Individuals with Disabilities Education Act (IDEA)
- Free Appropriate Public Education (FAPE)
- **Least Restrict Environment (LRE)**
- Michigan Administrative Rules for Special Education (MARSE)
- Individualized Education Program (IEP)
- Procedural Safeguards

IDEA | Least Restrictive Environment

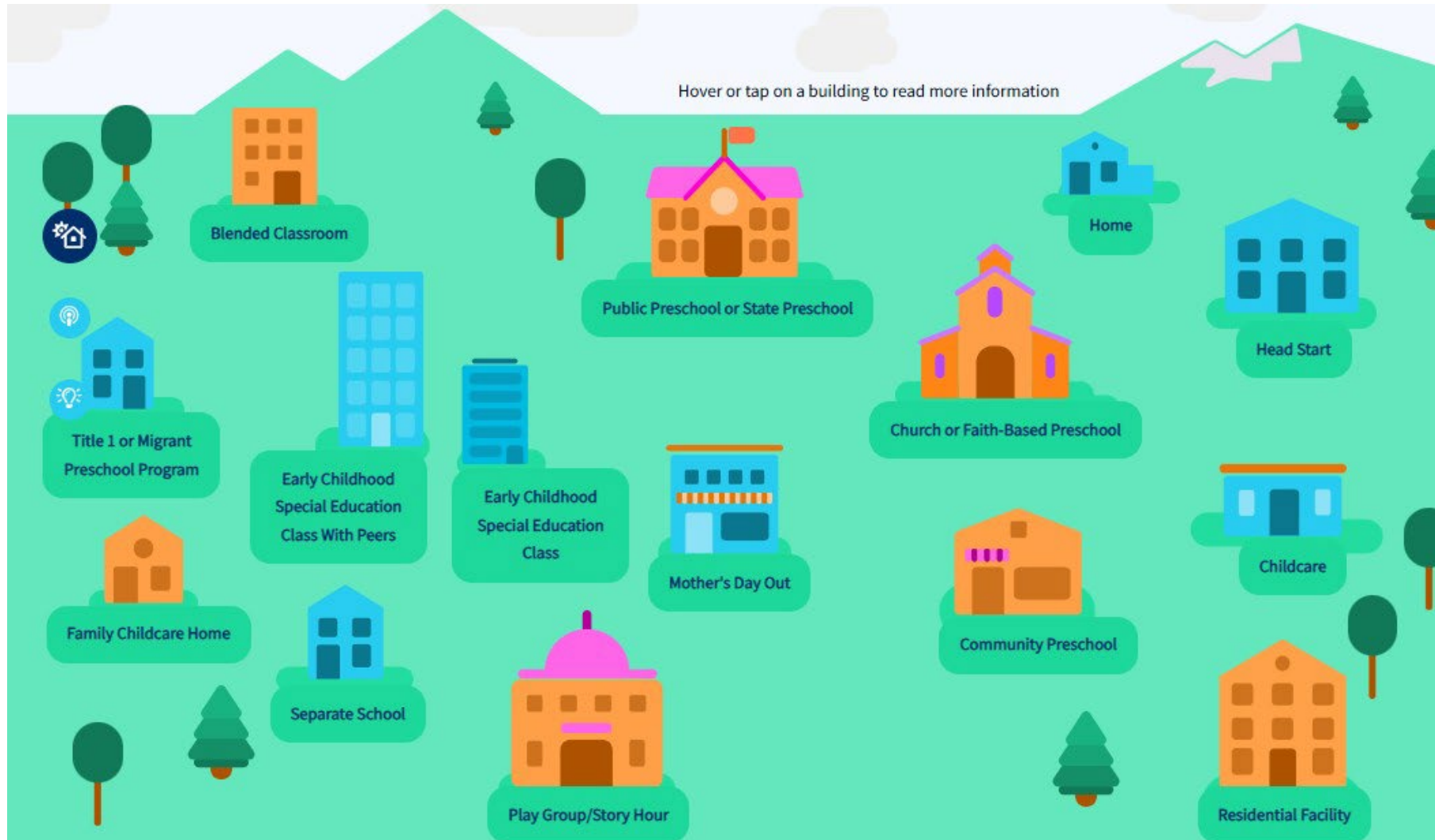
"To the maximum extent appropriate, children with disabilities, including children in public or private institutions or other care facilities, are educated with children who are nondisabled, separate schooling, or other removal of children with disabilities from the regular educational environment occurs only when the nature or severity of the disability of a child is such that education in regular classes with the use of supplementary aids and services cannot be achieved satisfactorily."



LRE | Placement Continuum



LRE | Placement Continuum | IDEA DATA Center



Indicator 6:
Preschool
Educational
Environments
(ages 3 through 5
in Preschool)

The Benefits of All Students Being Together

- Benefits for children with disabilities
- Benefits for children without disabilities
- Benefits for educators
- Benefits the community
- Benefits parents



Federal and State Resources



POLICY STATEMENT ON CHILDREN WITH DISABILITIES IN EARLY CHILDHOOD PROGRAMS (2023)

PRESCHOOL COLLECTIVE ACTION PLAN (2022)

PRESCHOOL IN THE LEAST RESTRICTIVE ENVIRONMENT (2025)

Agenda

- Preschool Development
- Individuals with Disabilities Education Act (IDEA)
- Free Appropriate Public Education (FAPE)
- Least Restrict Environment (LRE)
- **Michigan Administrative Rules for Special Education (MARSE)**
- Individualized Education Program (IEP)
- Procedural Safeguards



Michigan Administrative Rules for Special Education (MARSE)

Thirteen Categories of Eligibility

1. Autism Spectrum Disorder
2. Cognitive Impairment
3. Deaf-Blindness
4. Deaf or Hard of Hearing
5. Early Childhood Developmental Delay
6. Emotional Impairment
7. Physical Impairment
8. Other Health Impairment
9. Severe Multiple Impairments
10. Specific Learning Disability
11. Speech and Language Impairment
12. Traumatic Brain Injury
13. Visual impairment



Agenda

- Preschool Development
- Individuals with Disabilities Education Act (IDEA)
- Free Appropriate Public Education (FAPE)
- Least Restrict Environment (LRE)
- Michigan Administrative Rules for Special Education (MARSE)
- **Individualized Education Program (IEP)**
- Procedural Safeguards

Individualized Education Program (IEP)

- Occurs at least annually
- Parents are an equal part of the IEP team
- The IEP Team determines services and the LRE
- Development of the IEP
- District Offer of FAPE



IEP | MAF Resources for Families

Written Resources:

- Website
- Family Matters Sheet

Online Trainings:

- Recorded Videos
- Events Calendar

Parent Mentors:

- Mentoring
- IEP Reviews



Agenda

- Preschool Development
- Individuals with Disabilities Education Act (IDEA)
- Free Appropriate Public Education (FAPE)
- Least Restrict Environment (LRE)
- Michigan Administrative Rules for Special Education (MARSE)
- Individualized Education Program (IEP)
- **Procedural Safeguards**

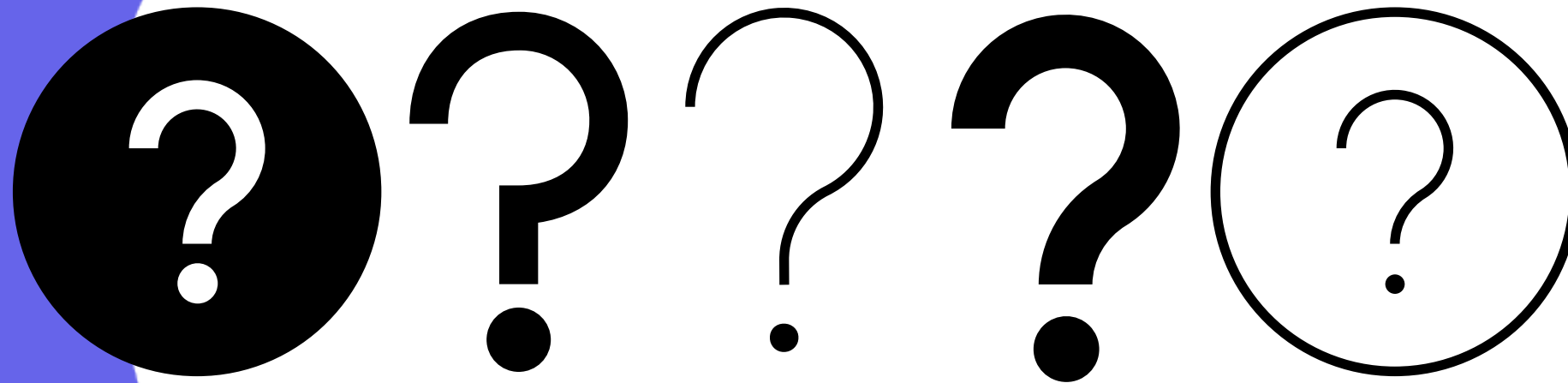
Procedural Safeguards

Procedural safeguards are designed to protect the rights of parents, and their child, and provide a way to resolve their disputes.

Some examples of procedural safeguards include the right to:

- Parental Consent
- Prior Written Notice
- Right to Participate in Decision Making
- Independent Educational Evaluations
- Dispute Resolution





800-552-4821 www.michiganallianceforfamilies.org

Questions

We are here to support you!



@MichiganAllianceForFamilies



@michiganallianceforfamilies



/MichiganAlliance

For more information visit

www.michiganallianceforfamilies.org

Call 800-552-4821

En Español 313-217-1060

لغة العربية 248-963-0607

info@michiganallianceforfamilies.org



Michigan Alliance for Families

In collaboration with



Michigan Alliance for Families is an IDEA Grant Funded Initiative of the Michigan Department of Education, Office of Special Education (MDE-OSE); the Michigan Department of Lifelong Education, Advancement, and Potential (MiLEAP); and Michigan's Federal Parent-Training and Information Center (PTIC) funded by the U.S. Department of Education, Office of Special Education Programs(OSEP).

www.michiganallianceforfamilies.org

1-800-552-4821

info@michiganallianceforfamilies.org

