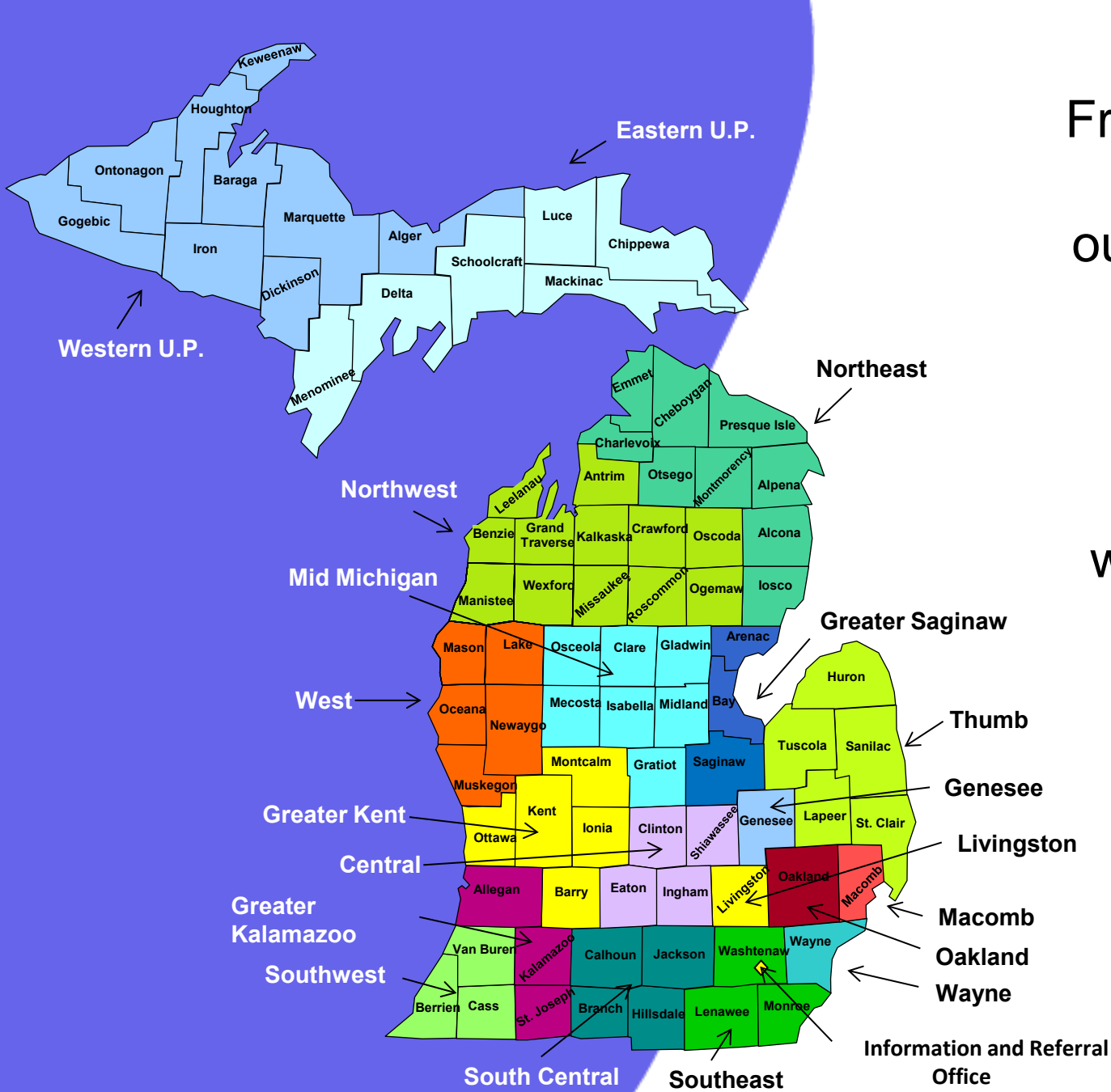


Transition From School to Adulthood



Free parent training and information to improve educational services and outcomes for students with disabilities

800-552-4821

www.michiganallianceforfamilies.org



Agenda

Define transition planning and why it's important

Review the transition planning process

Review options for life after school

Share community resources



What is transition planning?



Required by law

Part of the IEP

Student -centered

Collaborative

Ongoing



Educational Development Plan (EDP)

All students in 7th grade

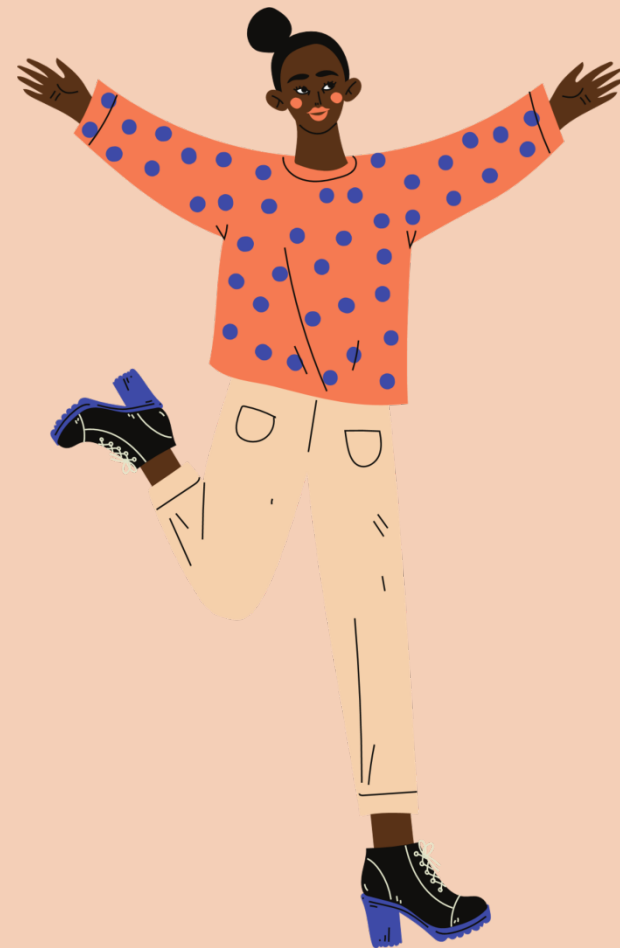
- Explore interests and career goals
- Review and revise in 8th grade

Written by the counselor

- Education and career goals
- Reviewed and updated yearly

Used to plan for high school

- Connection between school and career
- High school course options



Individuals with Disabilities Education Act (IDEA): The Law

Transition plans must include:

Data from transition assessments

Measurable postsecondary goals

Services to reach those goals

Information about transfer of rights



Get students involved!

BEFORE THE MEETING

Talk about interests and goals

Prepare materials

Practice

Invite others

DURING THE MEETING

Share strengths and interests

Present and read from materials

Ask questions and give opinions

Lead the meeting

Have students attend IEP meetings, even just for a portion



Transition Assessments



Work samples

Conversations with student and family

Observations

Interest inventories

Standardized assessments

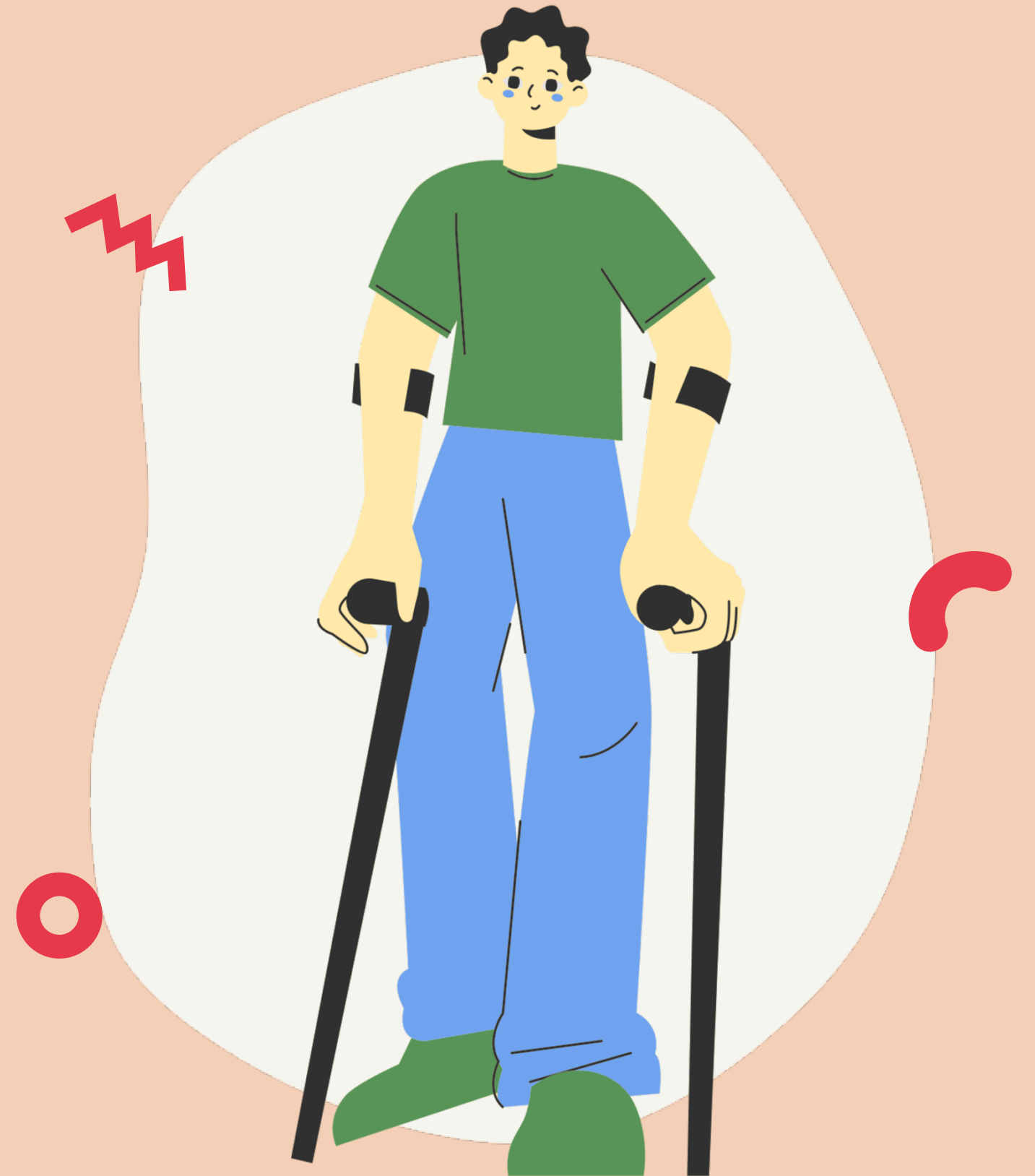


Postsecondary Goals

Long-term goals that are reviewed annually at the IEP

Goals must be written in 4 areas:

- Education
- Training
- Employment
- Independent Living



Postsecondary Goal Examples

Education/Training

Attend a four -year college for business management.

Participate in on -the-job training at Detroit -Metro Airport.

Participate in a skill building program to focus on time management

Employment

Work part -time at a pet store while attending a two -year college. After graduating, work full -time as a vet tech.

Work at the local hospital with a job coach.

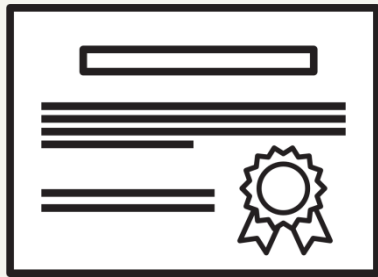
Independent Living

Live independently in an apartment, schedule appointments, pay bills, and access services in the community by using the city bus.

Prepare for each day by dressing and feeding oneself with assistance.



Course of Study



Exiting with a diploma

- Michigan Merit Curriculum
- Personal Curriculum
- Career and technical education



Exiting without a diploma

- "Certificate of completion"
- No statewide curriculum
- Education through age 26
- Career and technical education



Transition Services

Activities to help the student achieve their postsecondary goals

Services must be:

Based on the student's needs, strengths, preferences, and interests.

Activities that the student and their community will complete.



Transition Services Examples

Training

Study skills training

Social skills training

Practice requesting accommodations

Education

Instruction and modeling in how to advocate for oneself in class

Direct instruction in math

Take a college tour

Employment

Learn to read and follow a daily visual schedule

Community work experience

Referral to vocational rehabilitation

Independent Living

Learn and master use of adaptive switches for kitchen appliances to prepare meals

Memorize phone number

Direct instruction in practical math skills



Age of Majority

Transfer of Rights

Schools must tell students that when they turn 18, they are an adult and have certain rights.

This must happen on or before the student's 17th birthday



Student Rights

This list is not comprehensive



The right to invite anyone they choose to their IEP meeting

The right to give permission for testing and evaluations

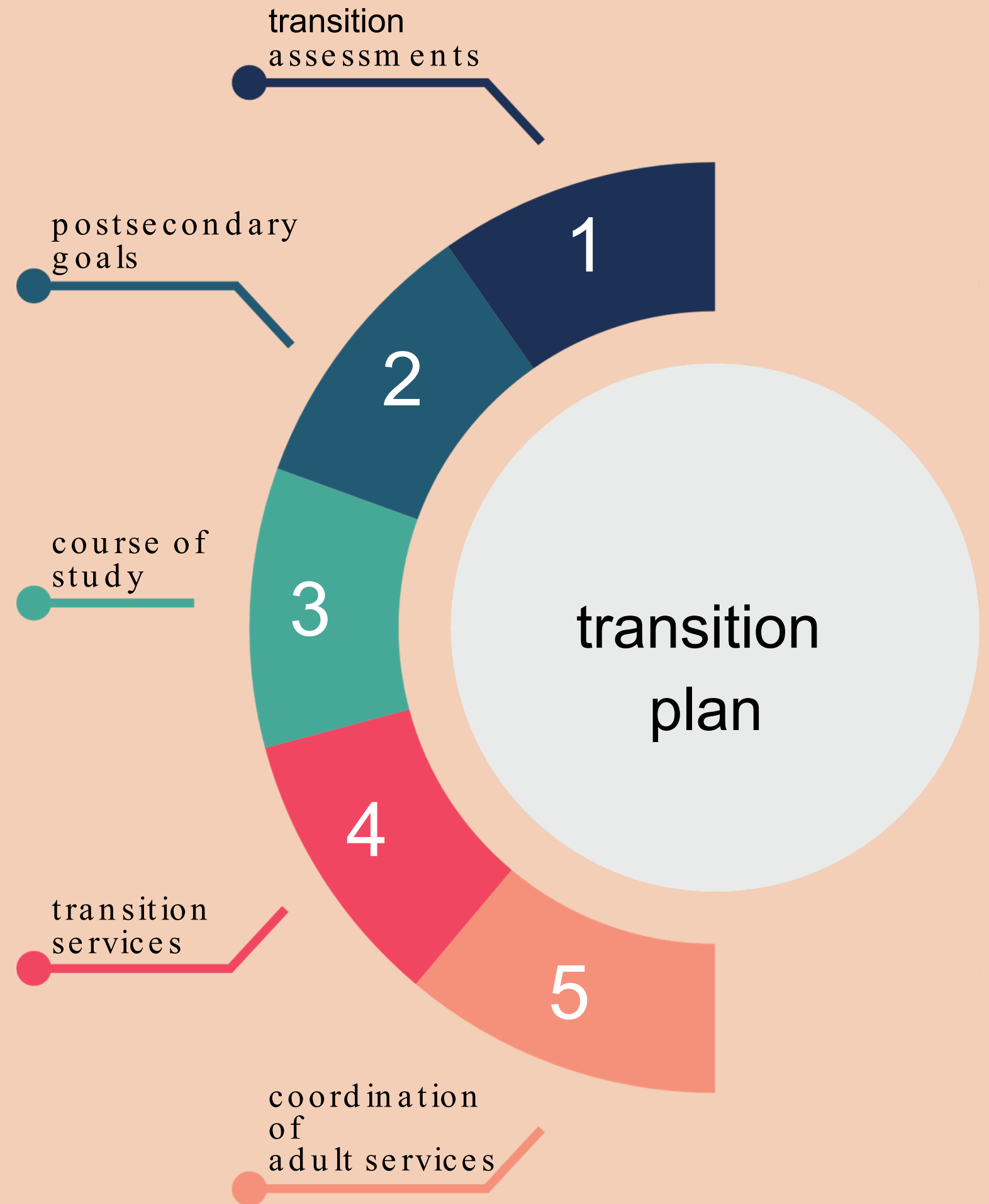
The right to provide input into the development of their IEP

The right to access school records

The right to disagree with the IEP team

The Transition Planning Process

Use these tools to prepare for the future



Alternatives to Guardianship

Every person can make choices
and has a right to make decisions

Supported decision making agreements

Power of Attorney

Representative Payee (for social security
benefits)





Get a
state ID

Register
for the
selective
service

Register to
vote

Applying for SSI and Medicaid

Supplemental Security Income (SSI)

- Income based first
- Comes with Medicaid
- Pays for food and shelter
- Standard monthly amount

Retirement, Survivors, Disability Insurance (RSDI)

- Insurance program for people who pay into the plan through payroll taxes
- Comes with Medicare
- Amount is based on work credits



How to Apply

Go to
SSA.gov

Menu: Supplemental Security Income

Complete
the online
application

"Apply online for SSI and Disability Benefits"

Schedule in-
person
appointment

Call 800-772-1213
Bring the applicant, and copies of your
documents

Helpful tips:

- DO apply for SSI/Medicaid
- DO include food and shelter expenses
- DO schedule an in-person appointment
- DO appeal if you're denied

- Do NOT apply for SSDI
- Do NOT apply before age 18
- Do NOT include parents' income/assets

Community Mental Health Services

The services and supports you need will mostly likely be paid for by Medicaid through the community mental health system

Supports Coordination

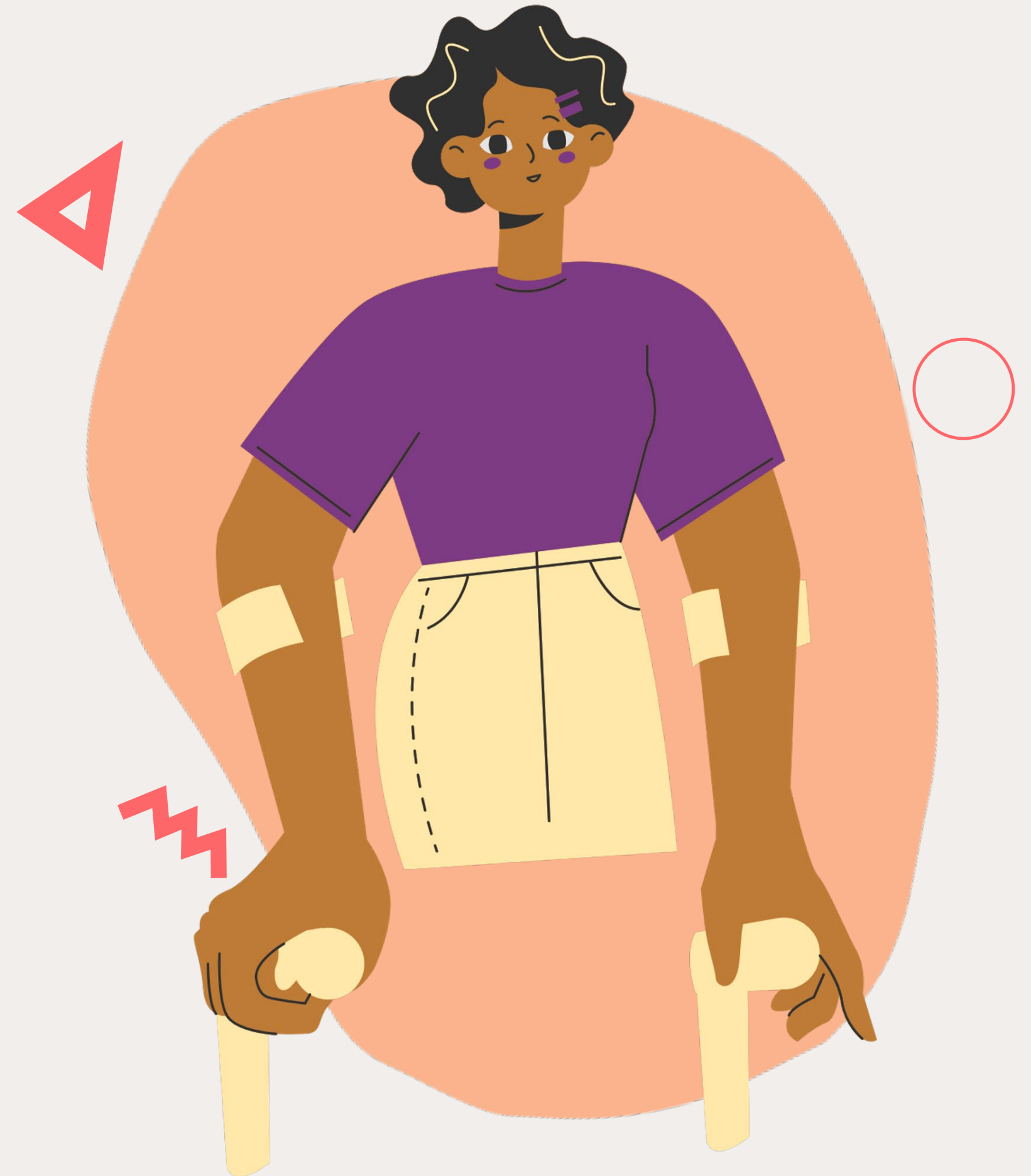
Paid staff

Transportation

Skill Building

Supported Employment

Peer supports



How to Enroll

Michigan.gov/ MDHHS



Behavioral Health/ Developmental Disability



Mental
Health



Community Mental Health Services: map of
programs

Or visit the Community Mental Health
Association of Michigan:

cmham.org/membership/cmhsp-directory

Options for Life After School



Paid employment

Skill-building programs

Supported employment

Community participation

A combination of things



Putting It All Together

Paid Employment

- Michigan Rehabilitation Services (MRS)
- Know your community and work together

Supported Employment

- Model of employment with support
- Job development and coaching
- Transportation

Skill Building Program

- Sometimes called "day programs"
- Focused on skill development rather than immediate employment:

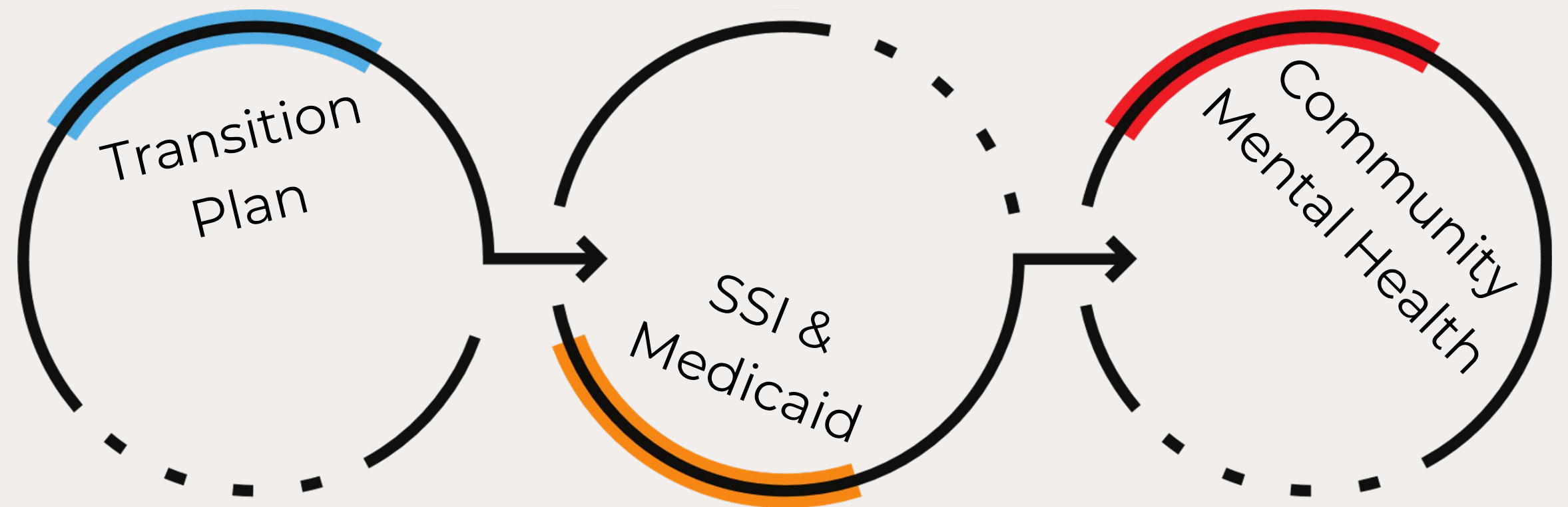
Community Participation

- Socialization and relationship building
- Community and recreational activities
- Maintaining health and safety



What's Your Vision?

Someone to love, something to do, and something to look forward to



Resources

The Arc's Center for Future Planning
futureplanning.thearc.org

Michigan Alliance for Families
michiganallianceforfamilies.org/transition

I'm Determined
imdetermined.org

Think College
thinkcollege.net

PACER
pacer.org/transition



We are here to support you!

 @MichiganAllianceForFamilies

 @mialliance

 @michiganallianceforfamilies

 /MichiganAlliance

For more information visit:

<https://www.michiganallianceforfamilies.org>

Call: 800-552-4821

En Español 313-217-1060

Statewide Email: info@michiganallianceforfamilies.org



Michigan Alliance for Families

Michigan Alliance for Families is an IDEA Grant Funded Initiative of the Michigan Department of Education, Office of Special Education, and Michigan's federal Parent-Training and Information Center (PTIC) funded by U.S. Department of Education, Office of Special Education Programs (OSEP).

www.michiganallianceforfamilies.org

1-800-552-4821

info@michiganallianceforfamilies.org



information, support, and education