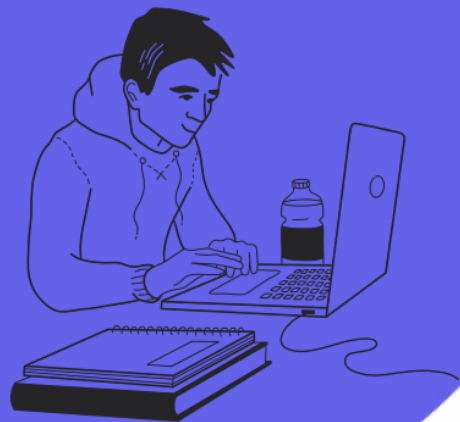


What Does Assistive Technology Look Like in Inclusive Education?

with Carolyn O'Hearn
from Alt+Shift

January 10th, 7-8 pm
March 10th, 12-1 pm
May 11th, 7-8 pm



Special education is a service, not a place. This series of discussions will help you consider the possibilities for Assistive Technology (AT) supports to meet your child's needs across environments. Attend all, or just the ones that interest you the most.

1/10/22 What is Inclusive Education?

Join the discussion to explore barriers to inclusive education. Connect with professionals and other families to share experience and ideas.

[Register at https://tinyurl.com/4h3ppkzc](https://tinyurl.com/4h3ppkzc)

3/10/22 Inclusive Education in the IEP: Using Assistive Technology

Join the discussion to brainstorm and share best practices for integrating AT every day and documenting in the Individualized Education Program. [Register at https://tinyurl.com/2p9b9ufx](https://tinyurl.com/2p9b9ufx)

5/11/22 Inclusive Society: Using Assistive Technology Beyond the School Day

Summer is coming! Join the discussion to explore ways to use AT in all aspects of life. [Registet at https://tinyurl.com/5txza8ua](https://tinyurl.com/5txza8ua)

Who should attend? Families with a child or young adult with a disability, school staff, other community members

